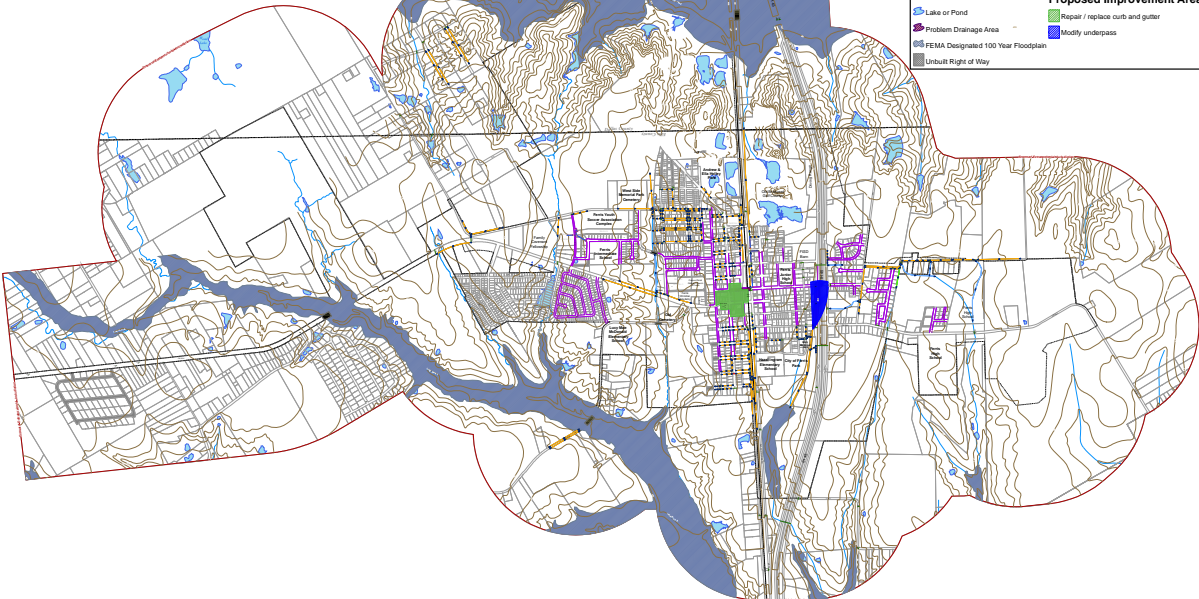


Drainage System Improvement Plan Projects 2006-2026				
	Project	Priority Level	Estimated Cost	Source of Funds
City Wide	Repair / replace damaged culverts throughout the city	2006	\$15,000	(GEN)
	Repair / replace damaged curbs and gutters with in CBD	2007-9	\$100,000	(GEN, Marshfield)
	Modify underpass at 5 th Street and 14 th to eliminate the ponding	2007-9	\$250,000	TxDOT
City Wide	Partner with Ellis County and TxDOT to ensure semi-annual removal of debris and vegetation from culverts, drainage channel, and outfalls	2006-10	\$10,000 Annually	(In-house)
City Wide	Develop flood plain ordinance	2007	\$2,000	(GEN)



Features

- Blocks
- Extent of Extraterritorial Jurisdiction
- City Limit
- County Line
- Railroad
- Bridge
- USGS Elevation Lines
- Stream
- Lake or Pond
- Problem Drainage Area
- FEMA Designated 100 Year Floodplain
- Unbuilt Right of Way

Existing Curb and Gutter Damage

No

Yes

Existing Culvert Damage

No

Yes

Proposed Improvement Areas

Repair / replace curb and gutter

Modify underpass

City of Ferris Ellis / Dallas Counties Texas

Map 9B Proposed Drainage System Improvements 2007-2027



Ellis / Dallas Counties



Population: 2,176
City Limits: 3,000 Acres
Extraterritorial Jurisdiction: 3,000 Acres
Distance To:
Dallas: 22 Miles
Houston: 10 Miles
Austin: 12 Miles

1 inch equals 600 feet
0 300 600 1,200 Feet
0 0.125 0.25 Miles

UTM Zone 14N
Datum: NAD 83
Projection: UTM
Units: Meter
Scale: 1:600,000
North Arrow: True North